



2011 ULM Softball Game Notes

2011 Schedule

DATE	OPPONENT	TIME (CT)
FEBRUARY		
11	(1) S.E. MISSOURI STATE	W, 11-3 (5)
	(1) NORTHWESTERN STATE	W, 8-0 (5)
12	(1) S.E. MISSOURI STATE	W, 6-1
	(1) EASTERN ILLINOIS	W, 2-1
13	(1) EASTERN ILLINOIS	L, 0-1
	(1) INDIANA STATE	W, 9-0 (6)
18	(2) vs Sam Houston State	W, 11-8
	(2) vs New Mexico State	L, 3-6
19	(2) vs No. 7 Oklahoma	L, 4-14 (5)
	(2) vs Southern Utah	L, 7-10 (8)
20	(2) vs Sam Houston State	W, 5-4 (8)
25	(3) vs Central Arkansas	L, 1-4
26	(3) vs No. 23 Houston	L, 0-8 (5)
	(3) vs Baylor	L, 1-2
27	(3) vs Sam Houston State	W, 5-4 (8)
	(3) vs Houston	L, 0-1
MARCH		
2	at Alcorn State	W, 5-4
4	(4) vs Furman	W, 12-3 (5)
	(4) vs No. 7 Tennessee	L, 1-3
5	(4) vs Georgia Southern	W, 10-5
	(4) vs Dutch National Team (exhib.)	L, 3-4
9	at Stephen F. Austin	L, 3-10
12	* SOUTH ALABAMA (DH)	L, 1-3
		L, 2-5
13	* SOUTH ALABAMA	W, 11-3 (5)
19	*at Troy (DH)	L, 0-3
		W, 6-5.
20	*at Troy	W, 7-1
22	CENTENARY	W, 8-0 (5)
23	STEPHEN F. AUSTIN	W, 11-2 (5)
26	*MIDDLE TENNESSEE (DH)	w, 9-8
		w, 5-3
27	*MIDDLE TENNESSEE	w, 15-12
31	NICHOLLS STATE	L, 5-7 (8)
APRIL		
2	*Florida Atlantic (DH)	L, 1-3
		W, 7-6
3	*Florida Atlantic	L, 4-6
9	*FIU (DH)	L, 2-5
		W, 8-7
10	*FIU	W, 11-0
12	at Grambling State	W, 7-0
16	*at North Texas (DH)	2 p.m.
17	*at North Texas	12 p.m.
19	GRAMBLING STATE	5 P.M.
22	*at Western Kentucky (DH)	4 p.m.
23	*at Western Kentucky	11 a.m.
26	at Arkansas (DH)	2 p.m.
28	at McNeese State	5 p.m.
29	ALCORN STATE	4 P.M.
MAY		
7	*UL-LAFAYETTE (DH)	1 P.M.
8	*UL-LAFAYETTE	12 P.M.
11	(5) Sun Belt Tournament	TBA
12	(5) Sun Belt Tournament	TBA
13	(5) Sun Belt Tournament	TBA
14	(5) Sun Belt Tournament	TBA
19	NCAA Regionals	TBA
20	NCAA Regionals	TBA
21	NCAA Regionals	TBA
26	NCAA Super Regional	TBA
27	NCAA Super Regional	TBA
28	NCAA Super Regional	TBA
JUNE		
1-6	College World Series	TBA

Home games in BOLD CAPS

*Sun Belt Conference Match

(DH) - Double Header

Tournament Legend

(1) ULM Mardi Gras Classic (Monroe, La.)

(2) Troy Cox Classic (Las Cruces, N.M.)

(3) QTI Powers Invitational (Waco, Texas)

(4) Tennessee Classic (Knoxville, Tenn.)

(5) Sun Belt Tournament (Lafayette, La.)



ULM WARHAWKS

2011 Record..... 23-17
SBC Record..... 9-6
Last Week..... 2-1
All-Time vs. North Texas..... 15-15
Last meeting L, 2-3

Game 41-43 ULM vs. North Texas

Date Sat.-Sun., Apr. 16-17, 2011

Location Denton, Texas

Field Lovelace Stadium

First Pitch Sat. - 2 p.m. (DH)

..... Sun. - 12 p.m.

Live Stats..... ulmwarhawks.com



NORTH TEXAS MEAN GREEN

2011 Record..... 17-24
SBC Record..... 3-12
Last Week..... 1-3
All-Time vs. ULM..... 15-15
Last meeting W, 3-2

GAME PREVIEW:

ULM and North Texas face each other for the first time this season as the Warhawks look to claim their first-ever series sweep over the Mean Green and second Sun Belt sweep this year. Last season North Texas took two-of-three games to win the series with ULM's only victory coming in an 8-0 six inning run-rule victory. ULM and North Texas are tied in the all-time series record 15-15.

ULM LAST TIME OUT:

ULM earned a mid-week win over in-state opponent Grambling State Tuesday afternoon in Grambling as it shutout the Lady Tigers 7-0. The victory marked the second-straight shutout for the Warhawks as well as their third-straight win and gives them five shutouts on the season.

A LOOK AT NORTH TEXAS:

North Texas enters the weekend with a 17-24 record on the season and sits ninth in the Sun Belt standings with a 3-12 league record. The Mean Green dropped all three games of their series to Florida Atlantic last weekend and are on a four-game losing streak after being run-ruled by No. 3 Texas Thursday. North Texas owns a 13-10 home record this season.

The Mean Green have four batters averaging over .300 this season, led by Molly Cantler who is batting .313 with a team-high 40 hits. Cantler also leads the team in RBI (27), home runs (7) and total bases (66) while Monica Hirsch has a team-high 24 runs. North Texas has a pitching staff ERA of 3.98 led by Brittany Simmons who has thrown a team-high 153.1 innings this season with 68 earned runs and 65 strikeouts.

ULM NEWS AND NOTES

- The Warhawks currently have a team batting average of .292 which ranks first all-time for the highest team batting average in program history. The current record is .284 which ULM set way back in 1981.
- This has been a season of firsts for ULM, including claiming its first-ever series wins over formidable opponents Troy and FIU and its first-ever series sweep of Middle Tennessee.
- Tiffany Mills pitched her second two-hitter of the season Tuesday against Grambling State and tied her season-high with seven strikeouts. The game marked her second shutout of the season and fourth of her career.
- Heather Fritz has a team-low 1.68 ERA and has struckout 19 batters in just 25.0 innings pitched this season while allowing only six earned runs.
- ULM continues to rank among the best of the nation statistically including sitting 15th in the NCAA in stolen bases per game (1.92) and 48th in scoring (5.31). ULM also ranks 63rd in batting average (.293) and 69th in double plays per game (0.31).
- Nationally, three Warhawks rank in the top-50 in the NCAA. Stand-out player Brianna Love has six top-40 rankings, including ninth in walks (0.90), 15th in runs per game (1.15) 20th in triples (4.0), 32nd in triples per game (0.10), 35th in home runs (11) and 38th in slugging percentage (.791). Janel Salanoa boasts two top-10 rankings, including seventh in sacrifice flies (4.0) and is the eighth-toughest player to strikeout in the nation (37.7) while Katie Girardi ranks 19th in walks per game (0.79).
- Brianna Love picked up her second-consecutive Sun Belt Player of the Week honor after her outstanding performance at Florida Atlantic. In nine games she has amassed an eye-boggling 17 runs, 13 RBI, 38 total bases, six home runs, seven stolen bases, three doubles, one triple and 10 walks, four intentional with a combined 15-for-24 performance for a .625 batting average.
- Jessica Olguin is the only Warhawk to have four hits in one game this season which happened in two separate occasions. Olguin did it first in a 4-for-4 performance in the second game against Troy Mar. 19. and repeated it after a 4-for-5 effort against Middle Tennessee Mar. 26.
- Coach Rosemary Holloway-Hill is in her 27th season at the helm of the ULM softball program and has amassed a 677-858-3 record for her career at ULM. Holloway-Hill took the Warhawks to the Sun Belt Conference Championship game in 2008 and boasts one All-American all-time in Sarah Dawson. Holloway-Hill also coached Lori Tande Bruscatto who was named to the ULM Athletic Hall of Fame in 2011.

Media Relations

ULM MEDIA RELATIONS CONTACT

Rachel Williams
office: (318) 342-5461
cell: (386) 852-0349
fax: (318) 342-5464
email: willliart@warhawks.ulm.edu

POSTGAME INTERVIEWS -- will be conducted at a designated location following a NCAA mandated 10-minute cooling-off period. ULM head coach Rosemary Holloway-Hill and selected players will be made available for interviews upon request. Media requests (at home) and for both ULM and opposing coaches and players should be made to the ULM softball SID. Opponent requests will be forwarded to the visiting SID. The Warhawk softball locker room is closed to the media.

INTERVIEWS DURING THE WEEK -- All interview requests must be arranged through Rachel Williams in the ULM Media Relations Office. Please contact Rachel Williams to arrange interviews during the week. Practice is closed, but arrangements can be made in advance if you are planning on shooting B-roll footage. Coach Holloway-Hill and ULM student-athletes are available for interviews on non-game days following practice or through special arrangements with Rachel Williams.

ULMWARHAWKS.COM -- All the latest scores, statistics and player information is available by accessing the softball section at ulmwarhawks.com. Game stories, previews, statistics, game notes and advisories will be sent to interested media via e-mail. Live stats for ULM fans are also available online at ulmwarhawks.com.

ADDITIONAL SERVICES -- In an effort to serve members of the media, the ULM Media Relations Office will, within reason and to the best of its ability, service all requests. Photographs of student-athletes or coaches will be made available for print or online media outlets unable to shoot a Warhawk basketball game. Photo credits must always read "Photograph courtesy of ulmwarhawks.com."

RADIO -- All radio stations wishing to broadcast the ULM Softball Complex should contact the ULM Media Relations Office at least one week prior to the event. Space will be provided for the official radio station of the visiting team; others will be accommodated as space permits. Phone lines must be arranged for all stations in advance.

GAME NOTES -- Media members can receive the Warhawk Softball game notes via e-mail by contacting Rachel Williams.

WE ARE THE ULM WARHAWKS -- We are ULM. In all references to Warhawk athletics, please use the acronym 'ULM'. The only other acceptable version is the full name of the institution, the University of Louisiana at Monroe. Any other reference, including Louisiana-Monroe, La.-Monroe, UL-Monroe, LMU, or simply Monroe are inaccurate. Refer to all ULM athletic teams as Warhawks including all women's teams. Lady Warhawks or Lady Hawks is not acceptable. Individual players may be referred to as a Warhawk.

LOVE PICKED PRESEASON PLAYER OF THE YEAR

For the second consecutive season, senior outfielder Brianna Love was selected as the Preseason Player of the Year by the nine head coaches of the Sun Belt Conference. Love earned her first Preseason Player of the Year in 2010.

RANKED OPPONENTS IN 2011

ULM has faced three ranked opponents this season in No. 7 Tennessee, No. 10 Oklahoma and No. 23 Baylor. The Warhawks fell a combined 24-7 in those three games. The Warhawks will face one more ranked opponent this season in SBC and in-state rival No. 18 UL-Lafayette.

LOVE TOPS THE CHARTS

Brianna Love currently ranks in the top-10 of every career category tracked at ULM, including first in career batting average (.349), first in slugging percentage (.657), first in on base percentage (.461), first in base on balls (106), second in runs scored (137) and second in triples (13). Love also owns top-five rankings in fourth other categories.

ULM PICKED SEVENTH IN SBC

ULM softball was picked to finish seventh in the Sun Belt Conference this season after receiving 25 votes in the preseason poll. The Warhawks finished the 2010 season seventh overall. UL-Lafayette earned 80 votes and all but one first place vote to rank first.

2010 RECAP

The Warhawks finished 2010 with its winniest season since 2007, going 24-26 overall and 9-14 in SBC play. ULM's 24 wins are the most since it went 24-38 overall in 2007. It also marked the third 20-win season for the Warhawks since joining the Sun Belt in 2007.

2010 OFFENSIVE LEADER

Love ranked first in virtually every offensive category for ULM in 2010, including batting average (.394), runs scored (41), hits (54), homeruns (11) and stolen bases (15).

ULM SIGNS TWO FOR 2012

The Warhawks landed two outstanding recruits for the 2012 season as Kayla Boening and Mackenzie Miller each signed National Letters of Intent in November.

Kayla Boening, a native of San Antonio, Texas, earned a spot on the first team all-state her sophomore and junior campaigns as a shortstop and was the District Defensive Most Valuable Player in 2009 and 2010 as a member of the Poth High School team. She also led the San Antonio area across all players in the 1A-5A classifications with a .593 batting average.

Mackenzie Miller, a native of Evergreen, Colo., has earned a slew of accolades over her three seasons with Conifer High School as a shortstop and utility player. A first team all-conference selection every season, she has three-consecutive Most Valuable Player honors from her high school team. She also earned an all-state honorable mention during the 2008-2009 season.

2011 Quick Facts

UNIVERSITY

Location	Monroe, La.
Founded	1931
Enrollment	9,004
Nickname	Warhawks
Colors	Maroon and Gold
Mascot	Ace
Conference	Sun Belt
President	Dr. Nick J. Bruno
DA	Bobby Staub
SWA	Tasha Tisher
Athletics Phone	(318) 342-3ULM
Web Site	ulmwarhawks.com

COACHING STAFF

Head Coach	Rosemary Holloway-Hill
Alma Mater	Oral Roberts, '77
Record at ULM (Seasons)	677-857-3 (26)
Assistant Coach	Sara Vogt
Alma Mater	Indiana, '03
Years at ULM	Third Season
Graduate Assistant	Paige Cassidy
Alma Mater	FIU, '10
Years at ULM	First Season

TEAM INFORMATION

2010 Record	24-26
2010 Sun Belt Finish	9-14 (7th)
2010 Sun Belt Tournament Finish	Quarterfinals
2010 Postseason	didn't qualify
Letterwinners Returning/Lost	13/4
Starters Returning/Lost	7/2
Pitchers Returning/Lost	3/1
Newcomers	5

FACILITY INFORMATION

Venue	ULM Softball Complex
Capacity	500
Dimensions (L-R)	200-210-220-210-200
Press Box Number	

PROGRAM HISTORY

All-Time Record (Percentage)	754-945-3 (.443)
NCAA Tournament Appearances	1
Years	1997
NCAA Tournament Record	1-2

SUN BELT HISTORY

All-Time SBC Record (Percentage)	30-53 (.361)
Sun Belt Tournament Appearances	3

By The Numbers

ULM	NORTH TEXAS	
23-17	Record	17-24
.292	Batting Avg.	.269
5.35	Runs/Game	4.44
7.65	Hits/Game	7.29
51	Doubles	47
8	Triples	7
25	Home Runs	33
183	RBI	166
78-95	Stolen Bases	37-45
3.36	ERA	3.98
0.57	K/IP	0.71
1.64	K/BB	1.61
0.35	BB/IP	0.44
.952	Fielding %	.960

2011 ULM Softball Team



BY CLASS

Seniors..... Sarah Carriger
 Heather Fritz
 Brianna Love
 Jessica Olguin
 Melissa Rivera
 Juniors Roxy Cassel
 Jessica Chastka
 Katie Girardi
 Tiffany Mills
 Sophomores..... Elena Di Mattia
 Charlotte Pastor
 Janel Salanoa
 Elise West
 Lacey Willis
 Freshmen..... Regina Ayala
 Miyuki Navarrete
 Samantha Riojas
 Stephanie Routzon

BY POSITION

C..... Roxy Cassel
 Katie Girardi
 IF..... Sarah Carriger
 Jessica Olguin
 Charlotte Pastor
 Samantha Riojas
 Stephanie Routzon
 Janel Salanoa
 Elise West
 OF..... Sarah Carriger
 Elena Di Mattia
 Brianna Love
 Miyuki Navarrete
 Melissa Rivera
 P..... Jessica Chastka
 Heather Fritz
 Tiffany Mills
 Stephanie Routzon
 UT..... Regina Ayala
 Lacey Willis
 DP..... Roxane Cassel

BY STATE

Arizona Samantha Riojas
 California Regina Ayala
 Tiffany Mills
 Miyuki Navarrete
 Jessica Olguin
 Melissa Rivera
 Janel Salanoa
 Colorado Stephanie Routzon
 Florida..... Katie Girardi
 Kansas..... Heather Fritz
 Louisiana..... Elena Di Mattia
 Charlotte Pastor
 Elise West
 Lacey Willis
 Oklahoma..... Sarah Carriger
 Texas..... Roxy Cassel
 Jessica Chastka
 Brianna Love

No.	Player	Pos.	B/T	Ht.	Yr.	Hometown(Previous School)
2	Lacey Willis	UT	L/R	5-2	So.	Winnfield, La. (Bossier Parish CC)
3	Elena Di Mattia	OF	L/R	5-4	So.	Sunset, La. (Beau Chene HS)
4	Brianna Love	OF	R/R	5-8	Sr.	Garland, Texas (Garland HS)
7	Miyuki Navarrete	OF	R/R	5-6	Fr.	San Jose, Calif. (Archbishop Mitty HS)
9	Jessica Olguin	IF	S/R	5-5	Sr.	Yorba Linda, Calif. (Esperanza HS)
10	Charlotte Pastor	IF	L/R	5-3	So.	Metairie, La. (St. Mary's Dominican HS)
12	Stephanie Routzon	P/IF	R/R	6-0	Fr.	Wheat Ridge, Colo. (Wheat Ridge HS)
13	Roxy Cassel	C/DP	R/R	5-8	Jr.	Deer Park, Texas (Deer Park HS)
14	Sarah Carriger	IF/OF	L/R	5-5	Sr.	Claremore, Okla. (Oklahoma State)
15	Jessica Chastka	P	R/R	5-8	Jr.	College Station, Texas (A&M Consolidated HS)
16	Janel Salanoa	IF	R/R	5-5	So.	San Jose, Calif. (Evergreen Valley HS)
17	Samantha Riojas	IF	R/R	5-6	Fr.	Phoenix, Ariz. (Centennial HS)
18	Elise West	IF	L/L	5-8	So.	Lafayette, La. (Lafayette HS)
19	Regina Ayala	UT	L/R	5-3	Fr.	Norwalk, Calif. (Santa Fe HS)
20	Melissa Rivera	OF	R/R	5-3	Sr.	Moreno Valley, Calif. (Canyon Springs HS)
22	Tiffany Mills	P	R/R	5-11	RSo.	Riverside, Calif. (Martin Luther King HS)
23	Heather Fritz	P	L/L	5-10	Sr.	Salina, Kan. (Salina HS South)
24	Katie Girardi	IF/C	R/R	5-8	Jr.	Pembroke Pines, Fla. (McArthur HS)

COACHING STAFF

Head Coach: Rosemary Holloway-Hill, 27th Season (Oral Roberts, '77)
 Assistant Coach: Sara Vogt, Third Season (Indiana, '03)
 Graduate Assistant Coach: Paige Cassidy, First Season (FIU, '10)

PRONUNCIATIONS

Regina Ayala a-yall-a	Jessica Olguin ol-geen
Jessica Chastka chas-t-ka	Samantha Riojas re-o-hoss
Elena DiMattia de-matt-e-ah	Stephanie Routzon rout-zun
Brianna Love bre-on-ah	Janel Salanoa sal-a-noah
Miyuki Navarrete me-you-key na-va-rhet	Sara Vogt..... vote

ULM's Record When...

OVERALL	23-17
NON-CONFERENCE	14-11
LOUISIANA TEAMS	3-1
SUN BELT	9-6
VS. TOP 25	0-3
DAY GAMES	
NIGHT GAMES	16-13
7-4	
HOME	
AWAY	13-5
NEUTRAL	5-7
5-5	
FEBRUARY	
MARCH	8-8
APRIL	11-7
MAY	4-3
7-3	
SUNDAY	7-3
MONDAY	N/A
TUESDAY	2-0
WEDNESDAY	2-1
THURSDAY	0-1
FRIDAY	4-3
SATURDAY	8-9
SHUTOUTS	
RUN-RULE GAMES	5-4
EXTRA-INNING GAMES	9-3
2-2	
ONE-RUN GAMES	
TWO-RUN GAMES	9-3
FIVE-RUN + GAMES	1-5
11-3	
SCORED FIRST	
OPPONENT SCORED FIRST	17-3
SCORED IN 1st INNING	6-14
OPPONENT SCORED IN 1st INNING	13-6
8-10	
SCORED 0-2 RUNS	
SCORED 3-5 RUNS	2-11
SCORED 6-9 RUNS	4-5
SCORED 10 + RUNS	10-1
7-0	
OPPONENT SCORED 0-2 RUNS	
OPPONENT SCORED 3-5 RUNS	9-3
OPPONENT SCORED 6-9 RUNS	9-7
OPPONENT SCORED 10 + RUNS	4-4
1-3	
OUT-HIT OPPONENT	
OUT-HIT BY OPPONENT	16-0
HITS ARE TIED	5-13
2-4	
MADE 0 ERRORS	
MADE 1 ERRORS	10-4
MADE 2+ ERRORS	7-2
6-11	
OPPONENT MADE 0 ERRORS	
OPPONENT MADE 1 + ERRORS	2-6
OPPONENT MADE 2+ ERRORS	6-7
15-4	
HIT 0 HOME RUNS	
HIT 1 HOME RUN	10-13
HIT 2+ HOME RUNS	7-3
6-1	
AFTER 4 LEADING	
AFTER 4 TRAILING	14-3
AFTER 4 TIED	4-10
5-4	
AFTER 5 LEADING	
AFTER 5 TRAILING	9-1
AFTER 5 TIED	2-12
6-2	
AFTER 6 LEADING	
AFTER 6 TRAILING	11-1
AFTER 6 TIED	2-14
3-0	

Head Coach Rosemary Holloway-Hill

With 26 years in the dugout for the ULM softball team, Rosemary Holloway-Hill enters the 2011 season as the longest tenured of all the current Warhawks head coaches. The dean of the ULM coaching family, Holloway-Hill enters her 27th season as softball skipper with more victories than any head coach in any sport in Warhawks history.

Entering the 2011 season, Holloway-Hill has led the Warhawks to 654 wins, three conference championships and two postseason appearances. Her 654 victories rank 31st among all NCAA active coaches. In the fall of 2009 she was honored at the National Fastpitch Coaches Association after reaching her 700th career coaching victory. Holloway-Hill also coached ULM's only All-American Sarah Dawson.

Holloway-Hill took the Warhawks to the Sun Belt Tournament for the third time in program history last season and made a run at the championship after pulling out an upset over No. 2 seed FIU in the first round. ULM claimed another win over No. 8 Middle Tennessee before eventually falling to the 2011 Sun Belt champions UL-Lafayette.

The longtime mentor of the ULM softball program, Holloway-Hill has constantly challenged her teams by playing some of the top talent in the nation. The 2007 season brought new challenges as the Warhawks played their first season in the highly competitive Sun Belt Conference. Despite finishing ninth in the league in its inaugural campaign, ULM once again finished with a winning record at home and tallied victories over the league's top three teams.

In addition to producing talented and winning teams on the diamond, Holloway-Hill has stressed that her student athletes enjoy a balanced collegiate experience. Community service and academics have been fundamental values within the Warhawks softball program thanks to the emphasis Holloway-Hill has placed on them. Since becoming head coach, 15 players have been named National Fastpitch Coaches Association All-America Scholar Athletes.

ULM's 2005 squad and Holloway-Hill were recognized by the NFCA for having one of the top academic records in the nation. On a list of the top cumulative grade point averages for the 2003-04 academic season, Holloway-Hill's squad ranked 77th overall with a 2.816 GPA, the highest in the Southland Conference and the second highest in the state of Louisiana.

As good as ULM has been in the classroom under Holloway-Hill, they have been even better on the field. In addition to having the most wins in ULM history, her 238 victories from the program's days in the Southland Conference were the most by any school in that league. Holloway-Hill posted her 200th-career win against the SLC came in a 5-2 decision over McNeese State on April 21, 2001.

Following the 2004 season, the NFCA recognized ULM's achievements on the softball field when its All-Time Top 50 poll was released. ULM was ranked No. 43 amongst the more than 250 Division I softball programs in the nation, the highest in the Southland Conference and the third highest amongst all the schools in the state of Louisiana. The top 50 ranking was compiled using weekly USA Today/NFCA polls from 1995 through 2003.

Holloway-Hill came to what was then Northeast Louisiana University in 1984 as an assistant coach to Mary Jo Murray before becoming the program's fifth head coach the following season. She promptly guided the Warhawks to the Southland Conference Tournament championship - the university's first - in her first season as head coach in 1985. Her 1986 squad also claimed the tournament title.

In 1992, ULM finished in second in the conference race but the team's record against a strong schedule - a trademark of a Holloway-Hill team - earned it the chance to compete in the National Invitational Championships in Macomb, Ill., a tournament for leading teams which did not make the NCAA playoffs. ULM won the tournament with a 6-1 record, defeating Ivy League champion Princeton in the finals, 3-0.

Holloway-Hill's greatest team came five years later. The 1997 edition, led by All-American pitcher Sarah Dawson, won the Southland Conference championship, posted a 47-12 record, was ranked No. 18 in the nation, and competed in the NCAA tournament before being defeated by eventual national runner-up UCLA.

Following the 1997 season, Holloway-Hill garnered numerous coaching honors. She was named Southland Conference Coach of the Year by her peers in the coaching ranks, Louisiana Coach of the Year by the Louisiana Sports Writers Association, and South Region Coach of the Year by the NFCA.



HOME RUNS THIS SEASON

No.	Date	Opp.	Batter	Inning	ROB	Count	Note
25.	04/3	Florida Atlantic	Love (11)	3rd	1	0-0	
24.	04/2	Florida Atlantic	Love (10)	6th	1	2-0	
23.	04/2	Florida Atlantic	Salanoa (7)	3rd	0	0-0	
22.	03/31	Nicholls State	Love (9)	6th	0	1-1	
21.	03/27	Middle Tennessee	Cassel (4)	7th	3	1-0	WO GS
20.	03/27	Middle Tennessee	Love (8)	5th	3	1-0	GS
19.	03/26	Middle Tennessee	Salanoa (6)	6th	1	1-0	
18.	03/26	Middle Tennessee	Love (7)	6th	0	1-1	
17.	03/26	Middle Tennessee	Salanoa (5)	3rd	1	2-2	
16.	03/26	Middle Tennessee	Cassel (3)	3rd	0	2-1	
15.	03/23	Stephen F. Austin	Love (6)	2nd	1	2-0	
14.	03/13	South Alabama	Love (5)	5th	1	1-0	WO
13.	03/13	South Alabama	Cassel (2)	1st	2	1-2	
12.	03/5	Georgia Southern	Salanoa (4)	1st	1	2-0	
11.	03/4	No. 7 Tennessee	Love (4)	1st	0	2-2	LO
10.	03/4	Furman	Salanoa (3)	3rd	0	1-1	
9.	03/4	Furman	Cassel (1)	3rd	1	3-1	
8.	03/4	Furman	Love (3)	3rd	0	2-0	
7.	02/27	Sam Houston State	Love (2)	2nd	1	2-1	
6.	02/20	Sam Houston State	Salanoa (2)	2nd	0	---	LO
5.	02/19	No. 6 Oklahoma	Love (1)	4th	0	---	
4.	02/19	No. 6 Oklahoma	Navarrete (1)	4th	1	---	
3.	02/18	Sam Houston State	Riojas (1)	5th	0	---	
2.	02/11	Northwestern State	Girardi (1)	4th	0	2-2	LO
1.	02/11	SE Missouri State	Salanoa (1)	2nd	2	2-2	

2011 Results

DATE	OPPONENT	RESULT	ULM R/H/E	OPP R/H/E	RECORD	SUN BELT	PITCHER OF RECORD	ATT	TIME
Feb. 11	(1) SE Missouri State	W, 11-3 (5)	11-9-0	3-4-6	1-0	0-0	Mills (W, 1-0)	220	1:42
Feb. 11	(1) Northwestern State	W, 8-0 (5)	8-5-1	0-4-3	2-0	0-0	Routzon (W, 1-0)	220	2:00
Feb. 12	(1) SE Missouri State	W, 6-1	6-10-1	1-7-0	3-0	0-0	Chastka (W, 1-0)	234	1:58
Feb. 12	(1) Eastern Illinois	W, 2-1	2-3-3	1-4-3	4-0	0-0	Mills (W, 2-0)	145	1:30
Feb. 13	(1) Eastern Illinois	L, 0-1	0-4-0	1-8-0	4-1	0-0	Routzon (L, 1-1)	176	1:47
Feb. 13	(1) Indiana State	W, 9-0 (6)	9-9-0	0-7-2	5-1	0-0	Mills (W, 3-0)	211	1:46
Feb. 18	(2) vs. Sam Houston State	W, 11-8	11-13-1	8-14-1	6-1	0-0	Routzon (W, 2-1)	462	2:00
Feb. 18	(2) at New Mexico State	L, 3-6	3-8-2	6-9-0	6-2	0-0	Mills (L, 3-1)	462	1:55
Feb. 19	(2) vs. No. 6 Oklahoma	L, 4-14 (5)	4-7-2	14-15-1	6-3	0-0	Mills (L, 3-2)	340	1:46
Feb. 19	(2) vs. Southern Utah	L, 7-10 (8)	7-7-5	10-14-4	6-4	0-0	Fritz (L, 0-1)	340	2:31
Feb. 20	(2) vs. Sam Houston State	W, 5-4 (8)	5-6-1	4-12-2	7-4	0-0	Routzon (W, 3-1)	0	1:55
Feb. 25	(3) vs. Central Arkansas	L, 1-4	1-3-3	4-5-1	7-5	0-0	Chastka (L, 1-1)	0	1:40
Feb. 26	(3) vs. No. 23 Houston	L, 0-8 (5)	0-0-2	8-12-1	7-6	0-0	Routzon (L, 3-2)	0	1:34
Feb. 26	(3) at Baylor	L, 1-2	1-4-4	2-7-0	7-7	0-0	Mills (L, 3-3)	1103	1:37
Feb. 27	(3) vs. Sam Houston State	W, 5-4 (8)	5-14-0	4-10-0	8-7	0-0	Fritz (1-1)	0	2:23
Feb. 27	(3) vs. No. 23 Houston	L, 0-1	0-5-0	1-5-1	8-8	0-0	Mills (L, 3-4)	0	1:55
Mar. 3	at Alcorn State	W, 5-4	5-7-0	4-5-5	9-8	0-0	Mills (W, 4-4)	115	1:50
Mar. 4	(4) vs. Furman	W, 12-3 (5)	12-14-0	3-5-2	10-8	0-0	Routzon (W, 4-2)	0	1:28
Mar. 4	(4) at No. Tennessee	L, 1-3	1-2-0	3-9-0	10-9	0-0	Mills (L, 4-5)	623	1:38
Mar. 5	(4) vs. Georgia Southern	W, 10-5	10-10-0	5-8-1	11-9	0-0	Mills (W, 5-5)	0	1:58
Mar. 9	at Stephen F. Austin	L, 3-10	3-9-4	10-9-2	11-10	0-0	Mills (L, 5-6)	114	2:02
Mar. 12	* South Alabama	L, 1-3	1-4-0	3-4-1	11-11	0-1	Mills (L, 5-7)	50	2:08
Mar. 12	* South Alabama	L, 2-5	2-6-4	5-10-1	11-12	0-2	Routzon (L, 4-3)	76	2:10
Mar. 13	* South Alabama	W, 11-3 (5)	11-12-2	3-5-3	12-12	1-2	Mills (W, 6-7)	36	1:51
Mar. 19	* at Troy	L, 0-3	0-3-2	3-7-0	12-13	1-3	Mills (L, 6-8)	-	1:39
Mar. 19	* at Troy	W, 6-5	6-10-0	5-12-1	13-13	2-3	Chastka (W, 2-1)	450	2:12
Mar. 20	* at Troy	W, 7-1	7-7-1	1-4-4	14-13	3-3	Mills (W, 7-8)	211	1:51
Mar. 22	Centenary	W, 8-0 (5)	8-9-2	0-0-2	15-13	3-3	Routzon (W, 5-3)	56	1:16
Mar. 23	Stephen F. Austin	W, 11-2 (5)	11-12-0	2-5-1	16-13	3-3	Mills (W, 8-8)	43	1:38
Mar. 26	* Middle Tennessee	W, 9-8	9-15-4	8-8-2	17-13	4-3	Chastka (W, 3-1)	-	2:28
Mar. 26	* Middle Tennessee	W, 5-3	5-8-1	3-8-1	18-13	5-3	Mills (W, 9-8)	76	1:48
Mar. 27	* Middle Tennessee	W, 15-12	15-15-2	12-18-1	19-13	6-3	Mills (W, 10-8)	80	2:44
Mar. 31	Nicholls State	L, 5-7 (8)	5-9-1	7-9-2	19-14	6-3	Routzon (L, 5-4)	105	2:27
Apr. 2	* Florida Atlantic	L, 1-3	1-4-1	3-6-2	19-15	6-4	Mills (L, 10-9)	130	1:30
Apr. 2	* Florida Atlantic	W, 7-6	7-11-0	6-8-2	20-15	7-4	Routzon (W, 6-4)	173	2:10
Apr. 3	* Florida Atlantic	L, 6-4	4-6-2	6-7-1	20-16	7-5	Mills (L, 10-10)	183	1:45
Apr. 9	* FIU	L, 2-5	2-4-3	5-9-0	20-17	7-6	Mills (L, 10-11)	63	2:05
Apr. 9	* FIU	W, 8-7	8-9-2	7-9-3	21-17	8-6	Chastka (W, 4-1)	85	2:14
Apr. 10	* FIU	W, 1-0	1-4-1	0-2-1	22-17	9-6	Routzon (W, 7-4)	203	1:34
Apr. 15	Grambling State	W, 7-0	7-9-0	0-2-5	23-17	9-6	Mills (W, 11-11)	150	1:50

home games in bold

- (1) ULM Mardi Gras Classic (Monroe, La.)
- (2) Troy Cox Classic (Las Cruces, N.M.)
- (3) QTI Powers Invitational (Waco, Texas)
- (4) Tennessee Classic (Knoxville, Tenn.)
- * Sun Belt Conference games

**2011 ULM Warhawk Softball
Overall Statistics for ULM (as of Apr 11, 2011)
(All games Sorted by Batting avg)**

Record: 22-17 Home: 13-6 Away: 4-7 Neutral: 5-5 San Belt: 9-6

Player	ava	at-bats	ab	r	h	2b	3b	hr	rbi	bb	slg%	tb	ho	so	ops	cs	sh	sb-att	po	e	fld%	
Oliver, Jessica	.397	39-39	131	28	52	6	1	0	14	60	.458	7	1	18	0	.492	0	6	14-17	24	2	0.100
Love, Brianna	.355	39-39	110	45	39	7	4	11	28	87	.791	35	1	15	0	.507	2	0	21-24	55	11	2.971
Salencia, Janel	.354	36-37	113	27	40	7	1	7	31	70	.619	12	2	8	0	.412	4	2	8-9	63	71	16.893
Cassel, Roxane	.311	39-39	119	21	37	6	0	4	39	55	.462	21	1	21	0	.418	0	2	4-4	161	23	7.963
Rivers, Melissa	.264	39-39	121	11	32	8	0	0	20	40	.331	4	1	14	2	.294	0	6	2-2	31	0	0.100
West, Elise	.260	28-28	73	7	19	2	0	0	3	21	.288	4	6	24	0	.349	0	1	4-4	184	12	5.975
Novorreta, Myuki	.250	39-39	100	26	25	1	0	1	10	29	.290	9	8	16	1	.330	0	4	11-16	99	89	6.969
Girardi, Katie	.239	38-37	88	8	21	5	1	1	17	31	.352	30	3	29	0	.443	1	2	2-4	103	35	6.958
Aval, Regina	.197	30-27	71	6	14	2	0	0	10	16	.225	5	1	10	0	.260	0	2	0-0	7	11	3.857

Rios, Samantha	.246	24-28	57	9	14	2	1	1	4	21	.368	2	1	14	1	.288	0	1	1-1	13	29	6.875
Dimattia, Elena	.200	33-1	5	14	1	0	0	0	0	1	.200	0	0	2	0	.200	0	0	4-5	0	0	0.000
Postor, Charlotte	.120	18-6	25	3	3	0	0	0	0	3	.120	3	2	11	1	.267	0	0	1-2	1	0	0.100
Willis, Lacey	.000	8-0	0	2	0	0	0	0	0	0	.000	0	0	0	0	.000	0	0	3-4	0	0	0.000
Totals	.293	39	1013	207	297	46	8	25	176	434	.428	132	22	176	5	.384	7	25	75-92	753	357	57.951
Opponents	.298	39	1026	171	306	44	4	21	149	421	.410	90	20	141	3	.364	6	34	35-45	747	344	64.945

LOB - Team (249), Opp (256). DPs turned - Team (12), Opp (12). CI - Team (1), Cassel 1, Opp (1). IBB - Team (7), Love 7. Picked off - Oliver 1.

(All games Sorted by Earned run avg)

Player	era	w-l	inn	so	oa	sho	sv	ip	h	r	er	bb	so	2b	3b	hr	b/era	wo	ho	bkfth	sho	
Mills, Tiffany	3.54	10-11	24	22	12	1/0	0	114.2	140	80	68	50	69	16	2	6	.301	6	9	0	0	19
Chastka, Jessica	3.71	4-1	12	3	1	0/0	0	34.0	47	28	18	8	13	3	0	6	.329	3	3	0	4	4
Routzon, Stephanie	3.80	7-4	20	14	4	3/0	0	77.1	96	47	42	28	40	23	2	8	.305	3	4	0	1	10

Fritz, Heather	1.66	1-1	10	0	0	0/0	1	25.0	28	16	6	4	19	2	0	1	.223	3	4	0	1	1
Totals	3.46	22-17	39	39	17	4/0	1	251.0	306	171	124	90	141	44	4	21	.298	15	20	0	6	34
Opponents	4.16	17-22	39	39	18	4/0	1	249.0	297	207	148	132	176	46	8	25	.293	21	22	2	7	25

PB - Team (6), Cassel 6, Opp (13). Pickoffs - Team (1), Cassel 1. SBA/ATT - Cassel (35-44), Mills (19-24), Routzon (12-16),



2011 ULM Warhawk Softball
Conference statistics for ULM (as of Apr 11, 2011)
(Sun Belt games only Sorted by Batting avg)

Record: 9-6 Home: 6-3 Away: 3-3 Sun Belt: 9-6

Player	avg	gp-gs	ab	r	h	2b	3b	hr	rbi	tb	slg%	bb	hp	so	gdp	ob%	sf	sh	sb-att	po	a	e	fld%	
Olguin, Jessica	.538	15-15	52	14	28	2	1	0	6	32	.615	4	1	5	0	.579	0	1	8-9	11	1	0	1.000	
Salanoa, Janel	.356	14-13	45	11	16	4	0	3	12	29	.644	2	1	2	0	.380	2	0	5-5	21	29	6	.893	
Love, Brianna	.310	15-15	42	15	13	0	2	5	12	32	.762	17	0	5	0	.500	1	0	8-10	25	5	2	.938	
Cassel, Roxane	.286	15-15	49	8	14	2	0	3	17	25	.510	8	0	11	0	.386	0	1	1-1	56	4	6	.909	
Girardi, Katie	.244	15-14	41	1	10	4	0	0	10	14	.341	10	1	15	0	.404	0	1	1-2	14	26	3	.930	
West, Elise	.244	15-15	41	3	10	0	0	0	0	10	.244	2	3	13	0	.326	0	0	1-1	103	5	3	.973	
Rivera, Melissa	.239	15-15	46	5	11	0	0	0	7	11	.239	2	1	7	1	.286	0	3	1-1	16	0	0	1.000	
Ayala, Regina	.194	13-13	36	0	7	0	0	0	4	7	.194	2	0	5	0	.237	0	1	0-0	5	3	1	.889	
Navarrete, Miyuki	.135	15-15	37	10	5	0	0	0	2	5	.135	7	1	5	1	.289	0	2	1-2	43	37	1	.988	

Riojas, Samantha	.400	3-2	5	1	2	1	0	0	0	3	.600	0	0	0	0	.400	0	0	0-0	1	2	1	.750	
Pastor, Charlotte	.222	8-2	9	3	2	0	0	0	0	2	.222	0	1	5	0	.300	0	0	1-1	1	0	0	1.000	
Dimattia, Elena	.000	14-1	2	6	0	0	0	0	0	0	.000	0	0	2	0	.000	0	0	1-1	0	0	0	.000	
Willis, Lacey	.000	4-0	0	2	0	0	0	0	0	0	.000	0	0	0	0	.000	0	0	2-2	0	0	0	.000	
Totals	.291	15	405	79	118	13	3	11	70	170	.420	54	9	75	2	.384	3	9	30-35	300	133	25	.945	
Opponents	.285	15	410	70	117	23	1	7	61	163	.398	42	9	50	1	.362	3	11	16-19	296	125	23	.948	

LOB - Team (106), Opp (106). DPs turned - Team (6), Opp (3). CI - Team (1), Cassel 1, Opp (1). IBB - Team (4), Love 4. Picked off - Olguin 1.

(Sun Belt games only Sorted by Earned run avg)

Player	era	w-l	app	gs	cg	sho	sv	ip	h	r	er	bb	so	2b	3b	hr	b/avg	wp	hp	bk	sfa	sha
Fritz, Heather	2.33	0-0	7	0	0	0/0	1	12.0	9	7	4	2	7	1	0	0	.188	3	4	0	1	0
Chastka, Jessica	3.15	3-0	5	0	0	0/0	0	13.1	13	8	6	4	4	2	0	1	.265	2	1	0	1	2
Mills, Tiffany	4.07	4-5	10	9	3	0/0	0	44.2	54	33	26	24	27	8	0	3	.286	3	3	0	0	6
Routzon, Stephanie	4.67	2-1	8	6	1	1/0	0	30.0	41	22	20	12	12	12	1	3	.331	2	1	0	1	3
Totals	3.92	9-6	15	15	4	1/0	1	100.0	117	70	56	42	50	23	1	7	.285	10	9	0	3	11
Opponents	4.40	6-9	15	15	8	1/0	0	98.2	118	79	62	54	75	13	3	11	.291	9	9	0	3	9

PB - Team (4), Cassel 4, Opp (5). SBA/ATT - Cassel (16-19), Routzon (7-10), Mills (6-6), Fritz (3-3).



ULM Game Highs

BATTING

At bats:	34	vs. Middle Tennessee (Mar. 26)
	34	at Grambling State (Apr. 12)
Runs scored:	15	vs. Middle Tennessee (Mar. 27)
Hits:	15	vs. Middle Tennessee (Mar. 26)
	15	vs. Middle Tennessee (Mar. 27)
RBI:	13	vs. Middle Tennessee (Mar. 27)
Doubles:	5	at Grambling State (Apr. 12)
Triples:	1	(eight times)
Home runs:	3	vs. Furman (Mar. 4)
Total bases:	28	vs. Furman (Mar. 4)
Walks:	8	vs. Georgia Southern (Mar. 5)
Strikeouts:	11	at Troy (Mar. 19)
Sac hits:	2	(five times)
Sac flies:	2	vs. Middle Tennessee (Mar. 27)
Stolen bases:	5	(four times)
Hit by pitch:	3	at Florida Atlantic (Apr. 2)
Caught stealing:	3	vs. Baylor (Feb. 26)
Runners LOB:	16	vs. Sam Houston State (Feb. 27)
Hit into DP:	2	vs. Southern Utah (Feb. 19)

FIELDING

Putouts:	24	(four times)
Assists:	16	vs. Eastern Illinois (Feb. 12)
Errors:	5	vs. Southern Utah (Feb. 19)
Passed balls:	1	(six times)
DPs turned:	2	at No. 7 Tennessee (Mar. 4)
	2	vs. FIU (Apr. 9)

PITCHING

Innings pitched:	8.0	(four times)
Runs allowed:	14	vs. No. 6 Oklahoma (Feb. 19)
Earned runs:	11	vs. No. 6 Oklahoma (Feb. 19)
	11	vs. Middle Tennessee (Mar. 27)
Walks allowed:	6	vs. South Alabama (Mar. 12)
	6	at Florida Atlantic (Apr. 2)
Strikeouts:	9	vs. Middle Tennessee (Mar. 27)
Hits allowed:	18	vs. Middle Tennessee (Mar. 27)
Doubles allowed:	5	at Troy (Mar. 19)
Triples allowed:	1	(five times)
Homers allowed:	3	vs. Sam Houston State (Feb. 18)
	3	vs. FIU (Apr. 9)
Wild pitches:	3	at Troy (Mar. 19)
Hit batters:	2	(five times)

Individual Game Highs

BATTING

At bats	5	(six times)
Runs scored	4	Brianna Love vs. SE Missouri State (Feb. 11)
Hits:	4	Jessica Olguin at Troy (Mar. 19)
	4	Jessica Olguin vs. Middle Tennessee (Mar. 26)
RBI:	6	Roxy Cassel vs. Middle Tennessee (Mar. 27)
Doubles:	3	Brianna Love at Grambling State (Apr. 12)
Triples:	1	(eight times)
Home runs:	1	(25 times)
Total bases:	7	Brianna Love vs. South Alabama (Mar. 13)
	7	Roxy Cassel vs. Middle Tennessee (Mar. 27)
	7	Brianna Love vs. Nicholls State (Mar. 31)
Walks:	3	Brianna Love vs. Sam Houston State (Feb. 27)
	3	Brianna Love at Troy (Mar. 20)
	3	Brianna Love vs. Middle Tennessee (Mar. 26)
Strikeouts:	4	Katie Girardi at Florida Atlantic (Apr. 3)
Sac hits:	1	(25 times)
Sac flies:	1	(seven times)
Stolen bases:	3	Brianna Love vs. SE Missouri State (Feb. 11)
	3	Brianna Love vs. Middle Tennessee (Mar. 26)
Hit by pitch:	1	(22 times)
Caught stealing:	1	(17 times)
Runners LOB:	8	Elise West at Florida Atlantic (Apr. 2)

FIELDING

Putouts:	14	Katie Girardi vs. Eastern Illinois (Feb. 12)
Assists:	8	Tiffany Mills at No. 7 Tennessee (Mar. 4)
Errors:	3	Janel Salanoa at Stephen F. Austin (Mar. 9)
Passed balls:	1	(six times)

PITCHING

Innings pitched:	7.0	(eight times)
Runs allowed:	10	Tiffany Mills vs. No. 6 Oklahoma (Feb. 19)
Earned runs:	7	Tiffany Mills vs. No. 6 Oklahoma (Feb. 19)
Walks allowed:	6	Tiffany Mills vs. South Alabama (Mar. 12)
Strikeouts:	7	Tiffany Mills vs. Middle Tennessee (Mar. 27)
Hits allowed:	12	Tiffany Mills vs No. 6 Oklahoma (Feb. 19)
Doubles allowed:	4	Stephanie Routzon at Troy (Mar. 19)
Triples allowed:	1	(five times)
Homers allowed:	2	(four times)
Wild pitches:	2	Tiffany Mills vs. No. 6 Oklahoma (Feb. 19)
	2	Stephanie Routzon at Troy (Mar. 19)
Hit batters:	2	(five times)

Career Watch List

BATTING AVERAGE

Name	AB	AVG
1. Love, Brianna (08-11)	195-552	.357
2. Tande, Lori (99-02)	242-706	.343
3. Boles, Stephanie (94-97)	233-695	.335
4. Goodman, Casey (00-03)	190-580	.328
5. Harris, Jackie (91-93)	171-534	.320
<i>(minimum 250 AB)</i>		

SLUGGING PERCENTAGE

Name	AB	SLG%
1. Love, Brianna (08-11)	552	.685
2. Tande, Lori (99-02)	706	.606
3. Goodman, Casey (00-03)	580	.600
4. Williams, Heather (04-07)	674	.497
5. Clampitt, Michelle (95-96)	314	.452
<i>(minimum 250 AB)</i>		

ON BASE PERCENTAGE

Name	AB	OB%
1. Love, Brianna (08-11)	552	.469
2. Dietz, Kristy (99-01)	458	.428
3. Goodman, Casey (00-03)	580	.411
4. Tande, Lori (99-02)	706	.399
5. Ward, Bette (81-82, 84)	267	.362
<i>(minimum 250 AB)</i>		

RUNS SCORED

Name	R
1. Tande, Lori (99-02)	158
2. Love, Brianna (08-11)	151
3. Baker, Kristen (02-05)	110
4. Dietz, Kristy (99-01)	107
5. Goodman, Casey (00-03)	106

DOUBLES

Name	3B
1. Tande, Lori (99-02)	49
2. Williams, Heather (04-07)	42
3. Goodman, Casey (00-03)	37
4. Love, Brianna (08-11)	34
5. Baker, Kristen (02-05)	32

TRIPLES

Name	3B
1. Love, Brianna (08-11)	14
1. Baker, Kristen (02-05)	14
3. Ward, Bette (81-82, 84)	11
3. Burrows, Kelly (91-92)	10
5. Aulds, Kathy (82, 84-85)	9
Harris, Jackie (91-93)	9
George, Millie (84-85)	9

HOME RUNS

Name	HR
1. Tande, Lori (99-02)	41
2. Love, Brianna (08-11)	40
3. Goodman, Casey (00-03)	37
4. Williams, Heather (04-07)	34
5. Miller, Megan (06-09)	23

RUNS BATTED IN

Name	RBI
1. Goodman, Casey (00-03)	147
2. Tande, Lori (99-02)	132
3. Williams, Heather (04-07)	130
4. Love, Brianna (08-11)	108
5. Boles, Stephanie (94-97)	79

TOTAL BASES

Name	TB
1. Tande, Lori (99-02)	428
2. Love, Brianna (08-11)	380
3. Goodman, Casey (00-03)	348
4. Williams, Heather (04-07)	335
5. Boles, Stephanie (94-97)	264

BASE ON BALLS

Name	BB
1. Love, Brianna (08-11)	116
2. Goodman, Casey (00-03)	85
3. Williams, Heather (04-07)	73
4. Dietz, Kristy (99-01)	71
5. Baker, Calli (05-08)	63

SAVES

Name	SV
1. Rittenhouse, Lindsay (05-08)	9
2. Van Oosbree, Annie (99-02)	6
T3. Arnold, Clara (85-88)	5
T3. Fritz, Heather (08-11)	5

STRIKEOUTS

Name	SO
1. Dawson, Sarah (94-97)	1280
2. Van Oosbree, Annie (99-02)	561
3. Causey, Kandace (07-10)	531
4. Rittenhouse, Lindsay (05-08)	517
5. Stewart, Wilanne (83-86)	333
9. Fritz, Heather (08-11)	127

FIELDING PERCENTAGE

Name	C-PO-E	F%
1. McNeil, Molly (08-09)	(396-27-2)	.995
2. Miles, Stacy (97)	(322-23-3)	.991
3. Dryer, Cathy (87-88)	(839-83-9)	.990
4. Miller, Megan (06-09)	(367-38-5)	.988
5. Goodman, Casey (00-03)	(942-143-15)	.986
10. Cassel, Roxy (09-11)	(513-74-10)	.980
<i>(minimum 250 IP)</i>		



SOFTBALL

TV/Radio Chart



19
Regina Ayala
 UT • 5-3 • Fr.
 Norwalk, Calif.



14
Sarah Carriger
 IF/OF • 5-5 • Sr.
 Claremore, Okla.



13
Roxy Cassel
 C/DP • 5-8 • Jr.
 Deer Park, Texas



16
Jessica Chastka
 P • 5-8 • Jr.
 College Station, Texas



3
Elena DiMattia
 OF • 5-4 • So.
 Sunset, La.



23
Heather Fritz
 P • 5-10 • Sr.
 Salina, Kan.



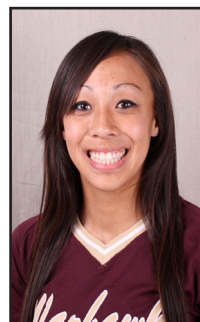
24
Katie Girardi
 IF/C • 5-8 • Jr.
 Pembroke Pines, Fla.



4
Brianna Love
 OF • 5-8 • Sr.
 Garland, Texas



22
Tiffany Mills
 P • 5-11 • R-So.
 Riverside, Calif.



7
Miyuki Navarrete
 OF • 5-6 • Fr.
 San Jose, Calif.



9
Jessica Olguin
 IF • 5-5 • Sr.
 Yorba Linda, Calif.



10
Charlotte Pastor
 IF • 5-3 • So
 Metairie, La.



17
Samantha Riojas
 P • 5-11 • Fr.
 Phoenix, Ariz.



20
Melissa Rivera
 OF • 5-3 • Sr.
 Moreno Valley, Calif.



12
Stephanie Routzon
 P/IF • 6-0 • Fr.
 Wheat Ridge, Colo.



16
Janel Salanoa
 IF • 5-5 • So.
 San Jose, Calif.



18
Elise West
 IF • 5-8 • So.
 Lafayette, La.



2
Lacey Willis
 UT • 5-2 • So.
 Winnifield, La.



Head Coach
Rosemary Holloway-Hill